

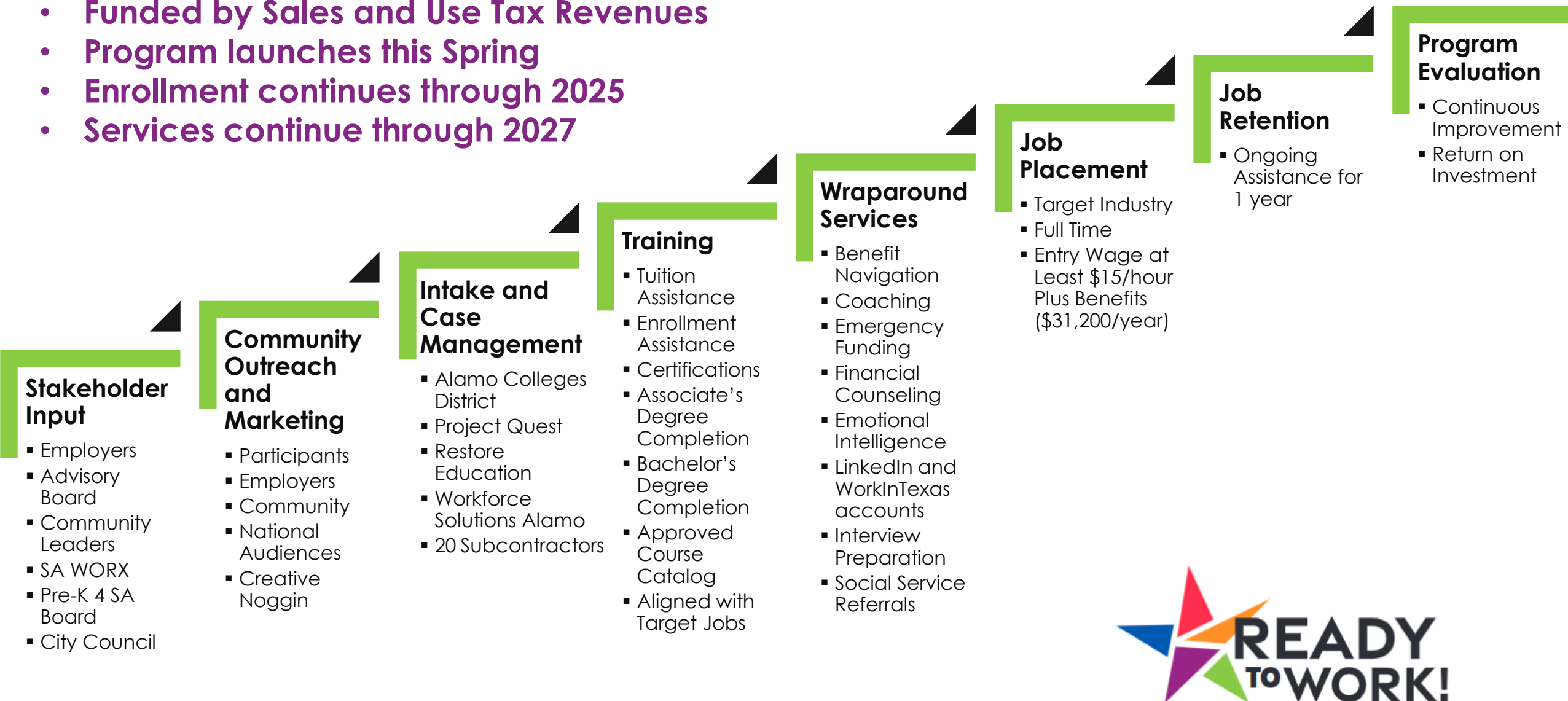


# Pre-K 4 SA Board

Alejandra Lopez  
Assistant City Manager  
City of San Antonio

# Ready to Work Overview

- **Funded by Sales and Use Tax Revenues**
- **Program launches this Spring**
- **Enrollment continues through 2025**
- **Services continue through 2027**



# Forecast Assumptions

Over **39,000** Applicants  
to be served through  
intake and initial  
assessment

Over **28,000** Participants  
to be enrolled in courses  
with subsidized tuition,  
emergency funding and  
wraparound services

Over **15,000** Training  
Completers to find well-  
paid jobs in high-demand  
careers

*Original financial forecast was based on Train for Jobs SA experience and discussions with RTW Advisory Board.*

*Revised financial forecast is based on RFP responses.*



# Participant Funding Caps

## Certificate Program

- Training resulting in industry-recognized credentials
- One-time cap of \$5,000 per Participant

## Associate's Degree Program

- Annual cap of \$2,200 per Participant
- Individual Participant cap of \$6,600
- Not available for AlamoPROMISE scholars

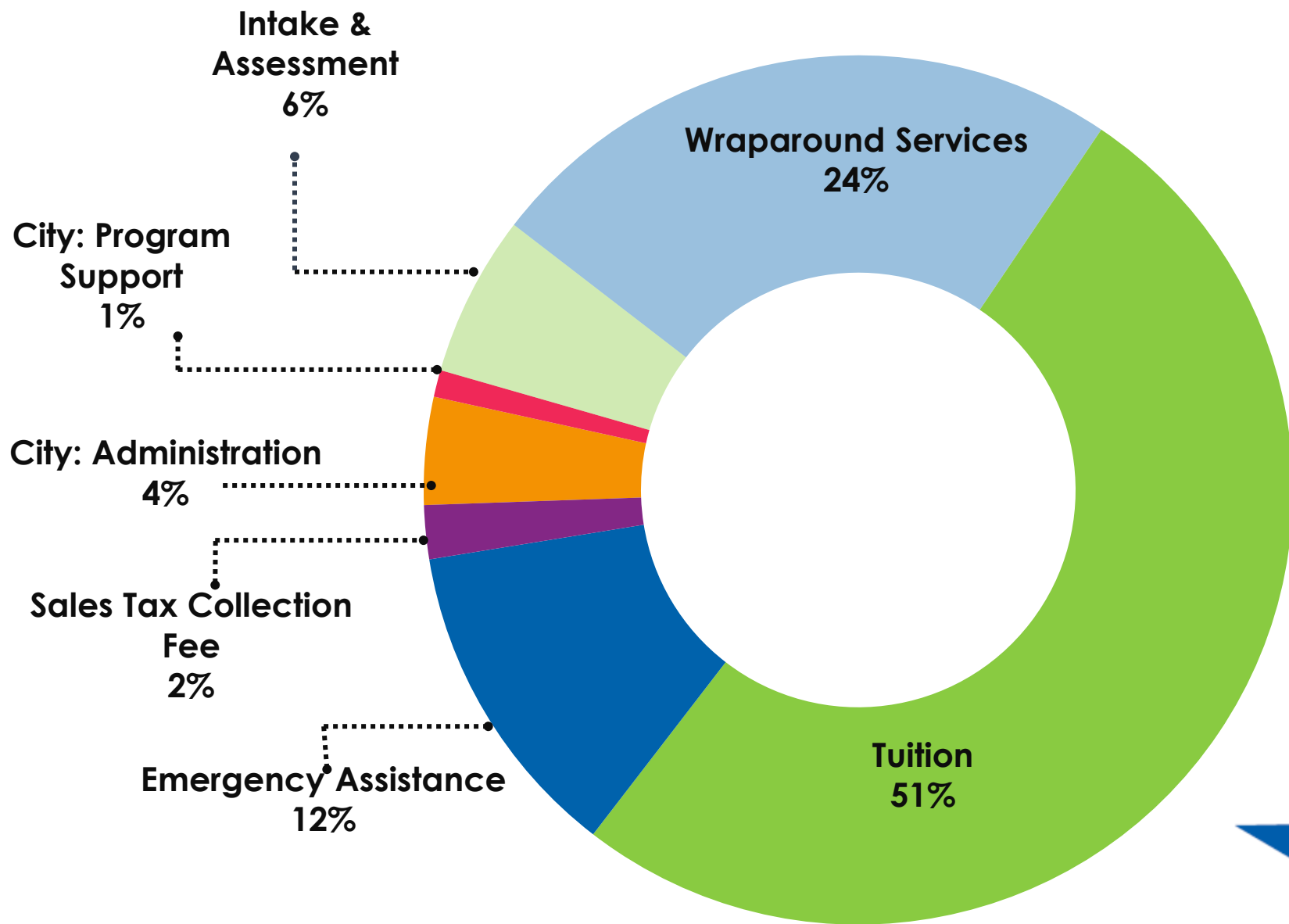
## Bachelor's Degree Program

- Annual cap of \$4,100 per Participant
- Individual Participant cap of \$12,300
- Available for Participants that have earned at least 60 college credits
- Not available for AlamoPROMISE scholars

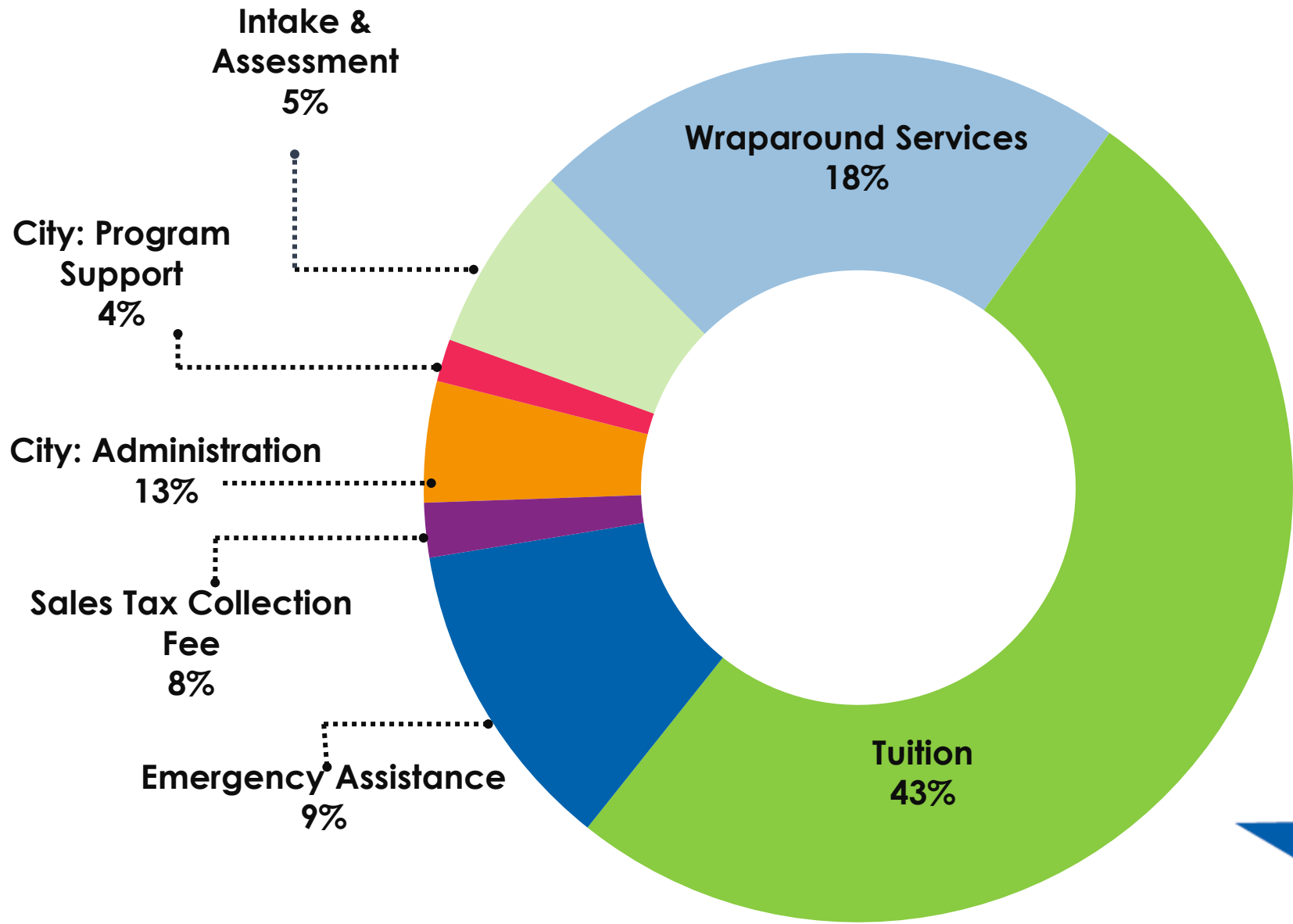
Program	Annual Cap	Total Cap
Certificate		\$5,000
Associate's Degree	\$2,200	\$6,600
Bachelor's Degree	\$4,100	\$12,300
Emergency Funding		\$1,500



# FY21-FY27 Financial Forecast (\$217.4m)



# FY 2023 Proposed Allocation (\$44.4m)





# Pre-K 4 SA Board

Alejandra Lopez  
Assistant City Manager  
City of San Antonio



# Performance Measures

- ✓ Unique **Applicants** (interviewed at intake)
- ✓ Participant **Training Slots** (sum of total educational opportunities available)
- ✓ Unique **Participants** (case managed over the program)
- ✓ Unique Participants that **Enrolled** in Approved Training Programs (100%)
- ✓ Unique Participants that **Exited** Approved Training Programs
- ✓ Unique Participants that **Successfully Completed** Approved Training Programs
- ✓ Percentage of Successful Approved **Training Completers** (at least 70%)
  - ✓ Unique Participants that Earned **Certifications/Credentials**
  - ✓ Unique Participants that Earned **Associate's Degrees**
  - ✓ Unique Participants that Earned **Bachelor's Degrees**
- ✓ Unique Completers **Employed** in Approved Job within 6 Months
  - ✓ (At least 80% of Approved Training Completers)
- ✓ Unique Employed Completers **Retained** 1 year after Placement in Approved Job
  - ✓ (At least 80% of Employed)
- ✓ Unique Participants that would **Recommend Program** to others upon Program exit
  - ✓ (At least 75% of Participants)

